

INSTRUCTIONS

Fender Kit for PowerPac (VF KITPP) a supplement to VF KIT Instructions

Part Check (in addition to parts supplied under "Fender Kit" instructions)

Two Fender Support Bars
(VF SUPBAR)

Two Fender polyethylene Support Bar Plugs
(VF SUPBARPLG)

Two Fender Support Clamps
(one hex bolt M10-30 long - attached to each)
(VF SUPCLMP)



Figure 1: Additional Vehicle Fender parts for PowerPac support

Tools Required

- Hacksaw or angle grinder
- Hammer
- Spanner 16mm

Assembly (fit standard Fender Kit parts first - see VF KIT instructions)



Figure 3: Fitting



Figure 4: Sizing up

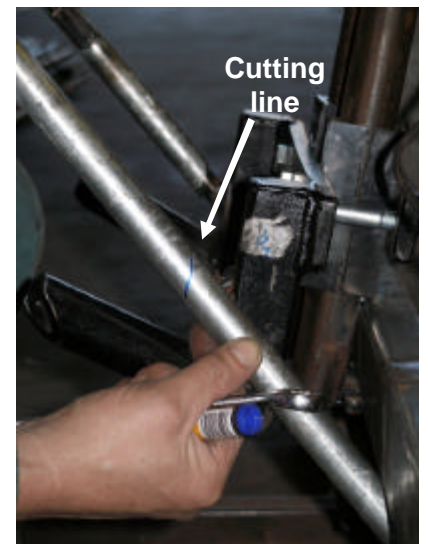


Figure 5: Close up showing vertical mark (indicates what angle to cut at)

Size and cut support bars to length

1. Place one of the clamps in a position similar to Figure 10 and push one of the support bars through (ensuring orientation of the support bar's welded tab is on the bar half closest to the ground – tabs can face either in or out). See Figure 8 as to why this is important. **DO NOT** tighten the clamp.
2. Slide the bar up or down through the clamp until the lower half of the bar can be made parallel to the tapered pin on the Fender Front framework, see Figure 4 (the bar will be hammered onto this pin later).

3. Once best possible fit is figured out mark each end of the bar as follows:

- < The top of the bar should be marked so that 1.5cm of bar will be left above the clamp. This will be a straight cross cut.
- < The bottom of the bar should be marked vertically as pictured (Figure 5) about 1.5 cm from the face of the Fender (to account for weld interference). This will be an angle cut following the vertical line.

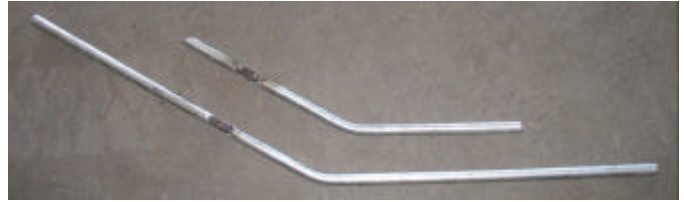


Figure 6: Raw bar versus cut to size bar

Fitting of support bars

4. After the both Support Bars have been sized and cut, fit each to the quad again this time hammering them onto the Fender Front framework's pins - use the tabs that have been welded onto the Support Bars (see Figure 8).

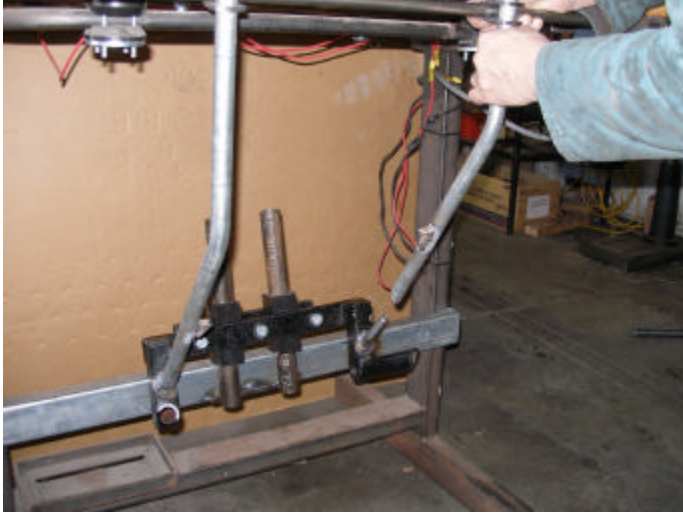


Figure 7: Second support bar about to be fitted

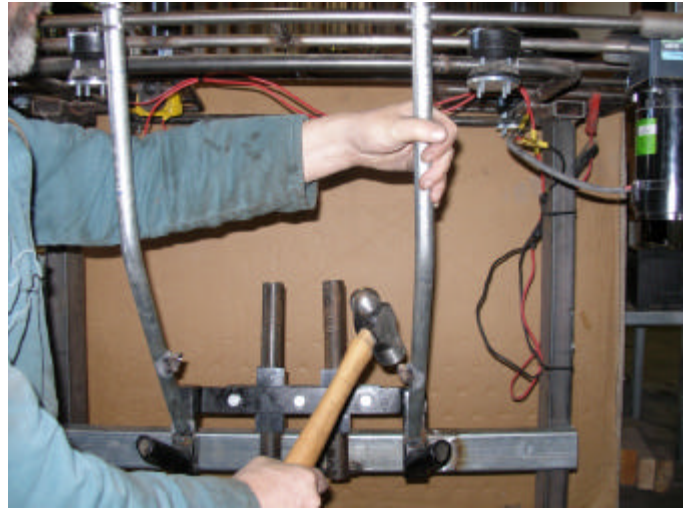


Figure 8: Hammering of welded tab for tight fit

Finishing touches

5. Wind the clamp's bolt in completely. This will cause the solid carrier bar to "indent" the softer support tube giving a good, "indexed" fit.
6. Gently hammer in the polyethylene plug so flush. These plugs are important – if any water finds its way into the pipe the result will be a rusty weakened, redundant support.



Figure 9: Plug fitting



Figure 10: Finished product (much of the PowerPac's weight now resting on the strong quad frame)