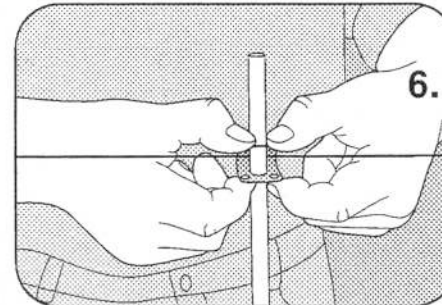
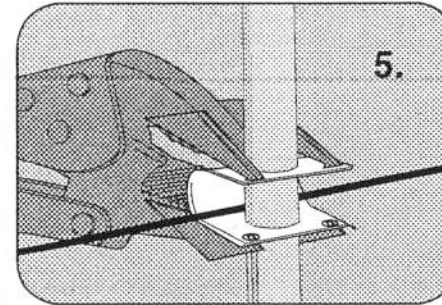
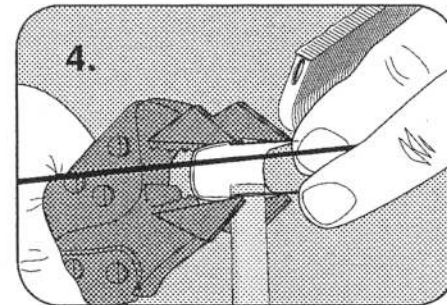
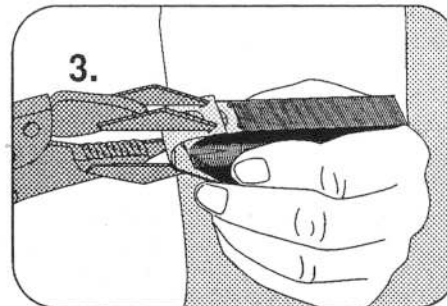
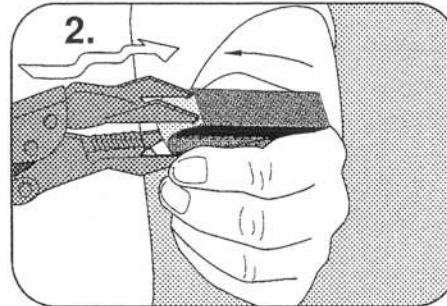
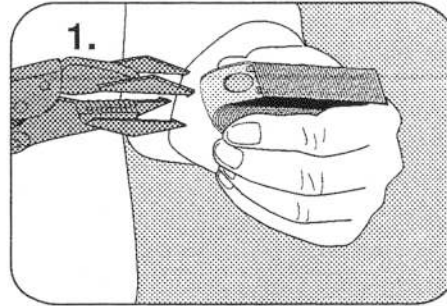


How to use the U-Clip

The U-Clip is sold in glued packs of 50 (much like staples for a staple gun). The Applicator Pliers are designed so that one clip at a time can be pulled off.

1. Remove the very first U-clip (covered in glue) on a new pack to expose the locating holes in the next clip. Hold the bundle of Clips in your left hand with the rounded end of the bundle pointed toward the Applicator in your right hand, and with the glued surface uppermost.
2. Hold the Applicator so that it is partially closed and gently force it onto the bundle so that the tips of the Applicator locate in the four locating holes (a slight wriggling action helps).
3. Squeeze the Applicator so that it snaps off the bundle with a U-Clip held in its jaws (in the over-centre locking position).
4. Take the fence wire in your left hand, use the Applicator to thread the bottom hole of the U-Clip over the top of the post, pull the wire into the U-Clip, thread the top hole over the post.



Note: The U-Clip depends on a certain amount of spring-tension to retain its full gripping power on the post. **If a clip is squeezed beyond the minimum necessary to load it on the post (over-compressed) it will lose some of its strength.**

5. Lower the U-clip and wire to the desired position on the post.

Note: The Applicator Pliers are factory-set at the correct closure to give optimum clip compression, but this setting can be overridden to allow for subsequent wear. To test for over-compression release the suspect clip and compare its curvature with an unused clip—they should be very similar.

6. You can load or adjust the U-Clip by hand as shown.

Note: Take great care when handling the U-Clip by hand - **always use both hands.**

Note: Because the U-Clip forms a solid enclosure for the wire it must be loaded with the wire as it is fitted onto the post. **It is strongly advised that the wire is not threaded through the clips after they have been fitted to the post.**